

LED WORK LIGHT



W-05401

Flood Beam

Description

This is what a fusion of power and longevity should be like. This model has been tested without compromise in the toughest weather conditions and the roughest roads. Its support offers numerous mounting options and its beam of light is flawless. Go ahead, give it a challenge!



60G

SHOCK



6500

LUMEN



IP68/69K

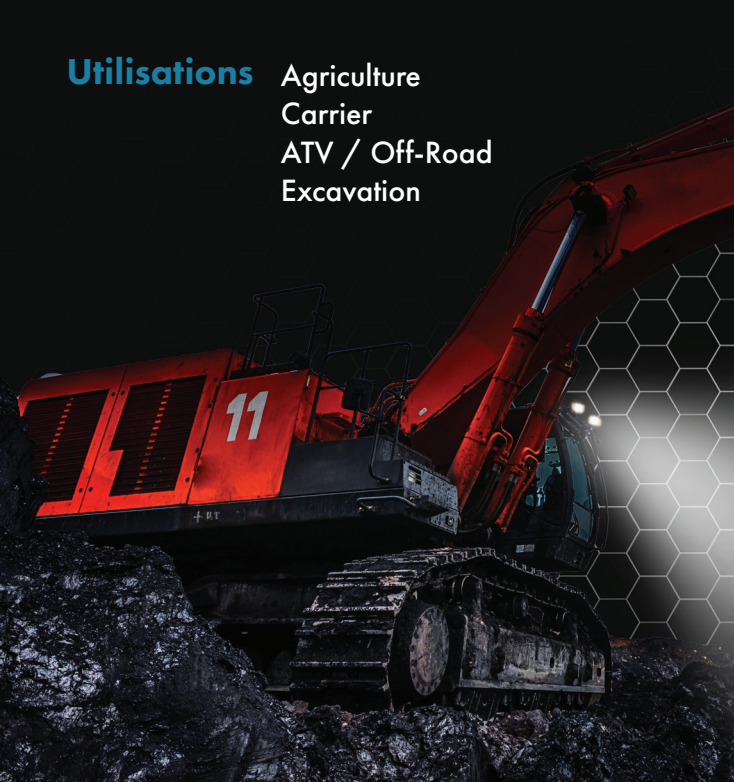
WEATHER
RESISTANT

2 Years Warranty

Utilisations Agriculture
Carrier
ATV / Off-Road
Excavation

Features

6500 lumens
18 LED of 3 Watts each
LEDs rated to 50 000 hours of operation
Color temperature: 6000K
Water & vibration resistant
Operating temperature: -40°C to +85°C
Certificates: CE, RoHS, EMC CISPR25 Class3,
IP68, IP69K, 60G (Shock)
Available only in Flood beam
Integrated 2 Pin Deutsch Connector (Female)
Additional 180mm cable with Deutsch 2 pin
connector (Male)



NORTH X LIGHT

Electrical specifications

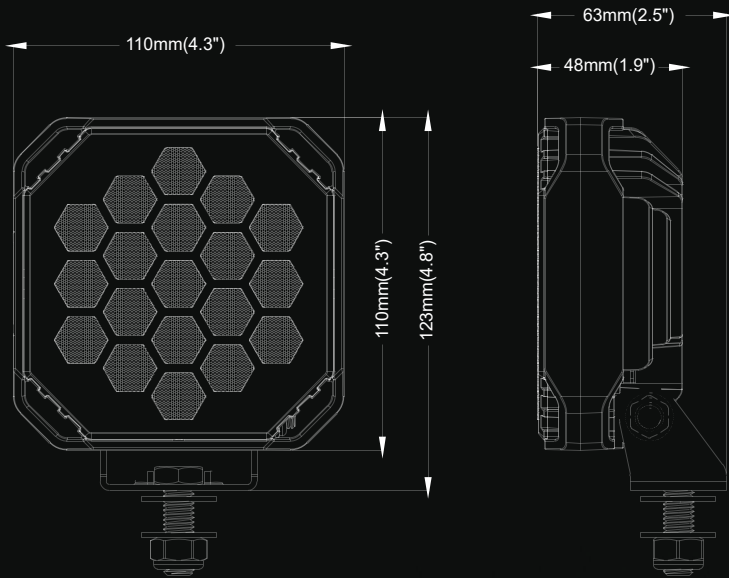
Input voltage: 10 to 32Vcc

Power consumption: 4.8A at 12Vcc / 2.7A at 24Vcc

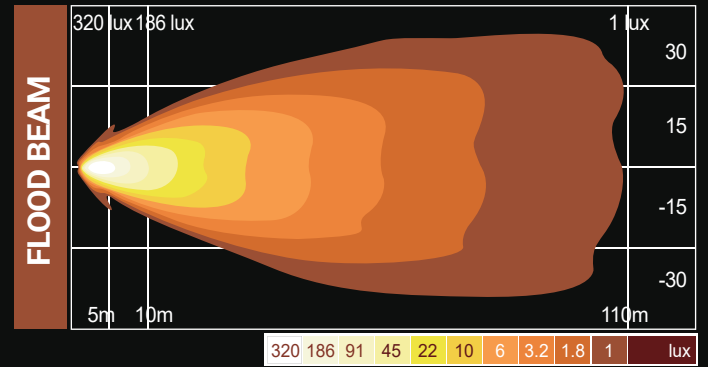
Power requirement (max.): 54 Watts

Recommended fuse: 5A

Dimensions



Light Patterns



Products

Part#	Description
W-05401	WORK LIGHT - SQUARE 6500 Lm – FLOOD BEAM

